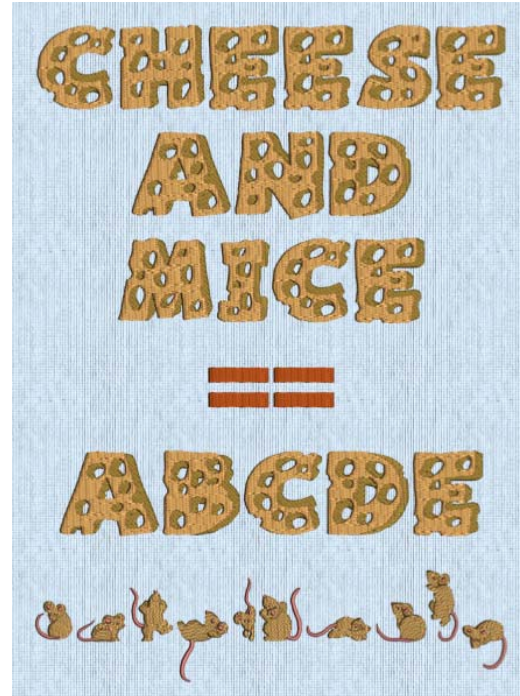


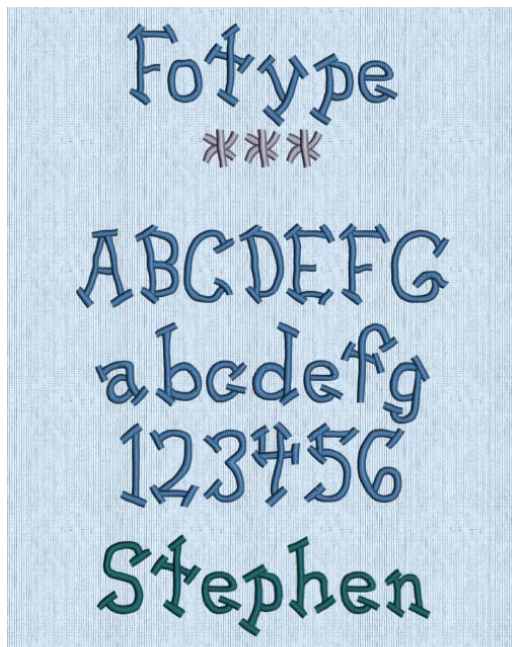
# Children Collection



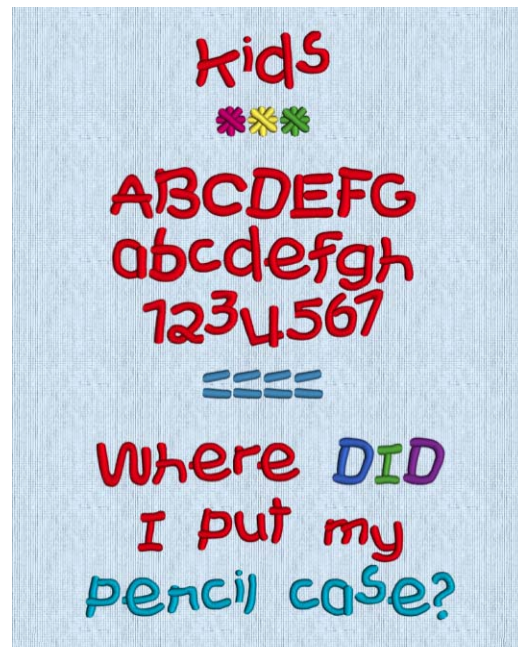
Animal Magic 45-120mm  
Non-editable



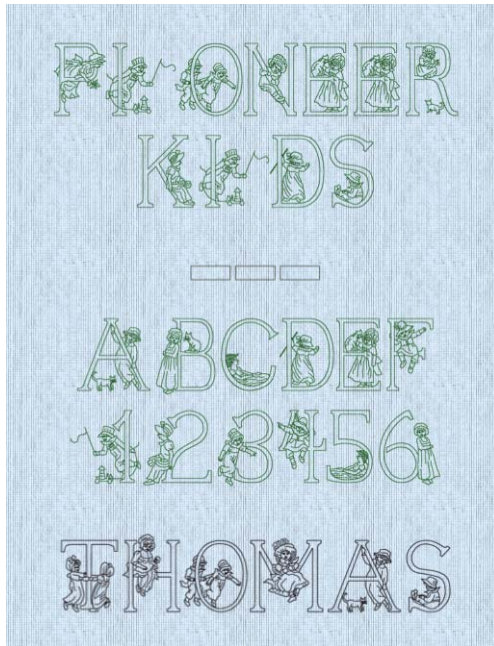
Cheese and Mice 2C UC 40-100mm  
Non-editable



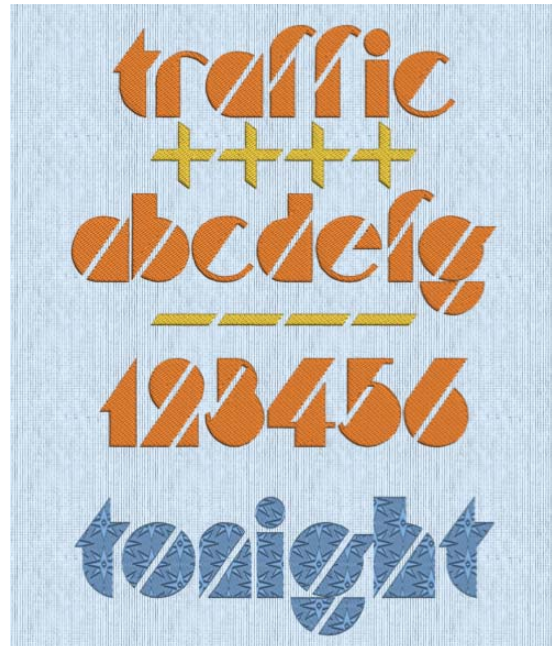
Fotype 15-45mm  
Continuous Satin



Kids 10-50mm  
Continuous Satin



Pioneer Kids UC 50-100mm  
*Running Stitch, Double Stitch, Triple Stitch*



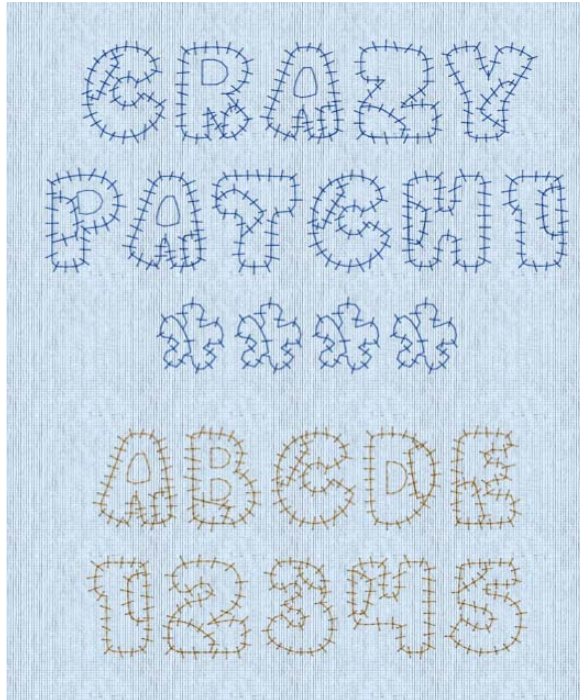
Traffic LC 15-40mm  
*Pattern Fill*



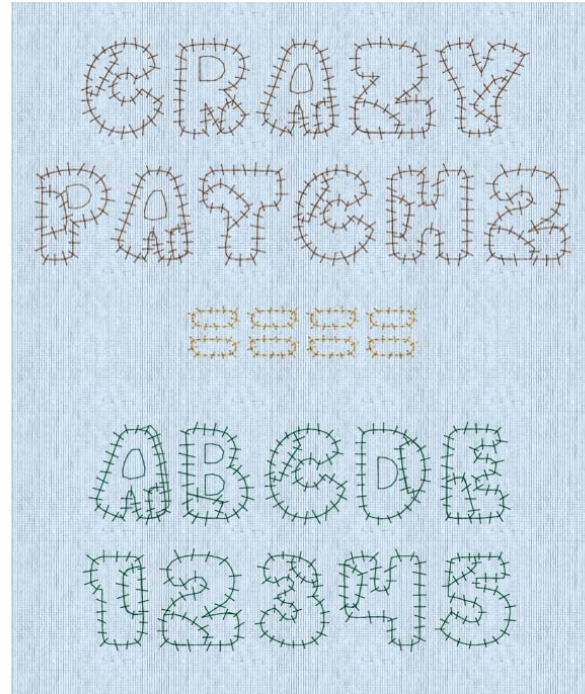
Typo 25-50mm  
*Continuous Satin*



# Display Collection



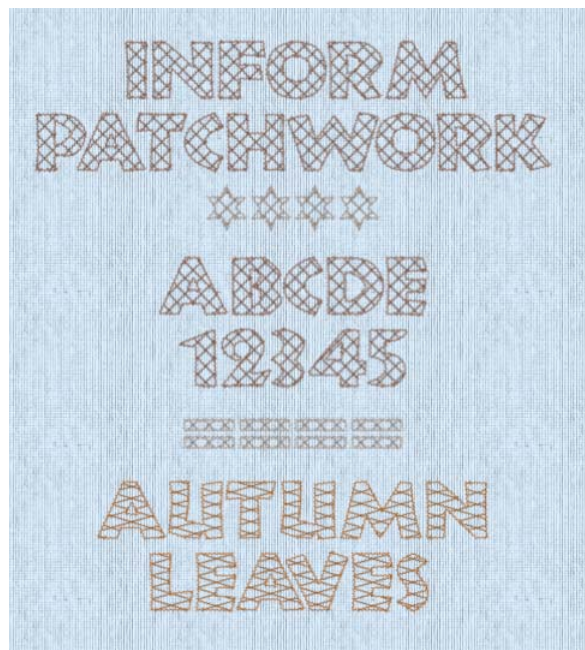
**Crazy Patch 1 UC 55-120mm**  
Triple Stitch  
Designed for appliqué with one fabric



**Crazy Patch 2 UC 55-120mm**  
Triple Stitch  
Designed for appliqué with two fabrics

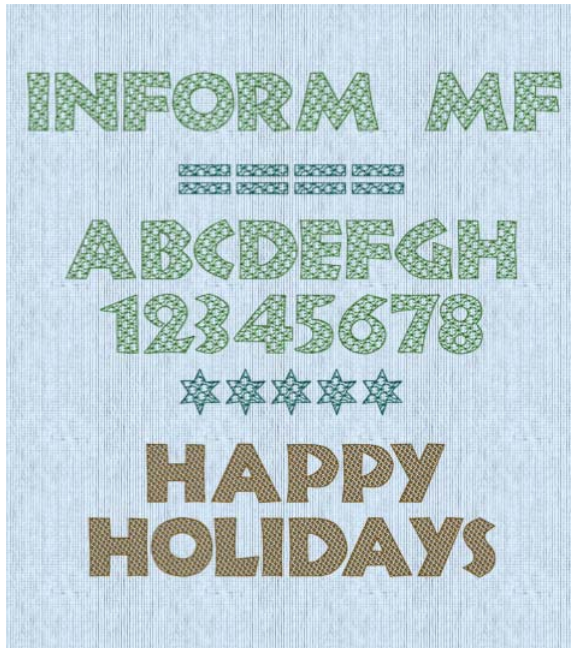


**Heart Initials 2C UC 30-50mm**  
Triple Stitch, Motif Fill, Continuous Satin



**Inform Patchwork UC 50-120mm XH**  
Crosshatch Fill, Double with Zigzag Return

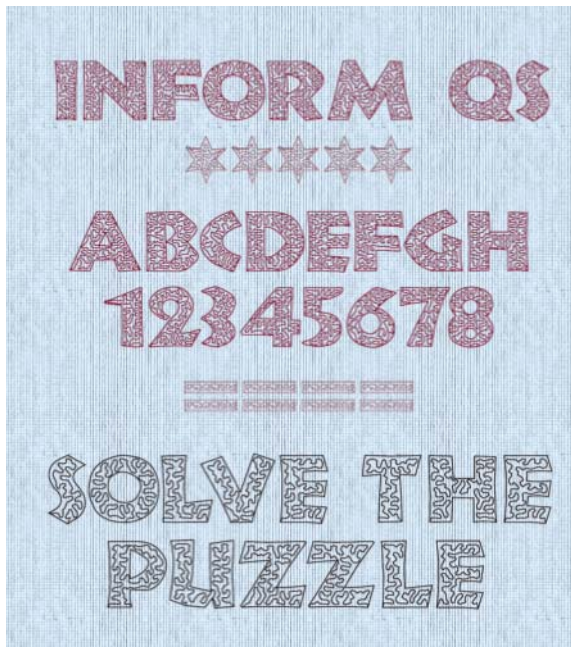




Inform UC 25-120mm MF  
*Triple Stitch, Motif Fill*



Inform UC 25-120mm MW  
*Triple Stitch, MultiWave Fill*



Inform UC 25-120mm QS  
*Triple Stitch, QuiltStipple Fill*

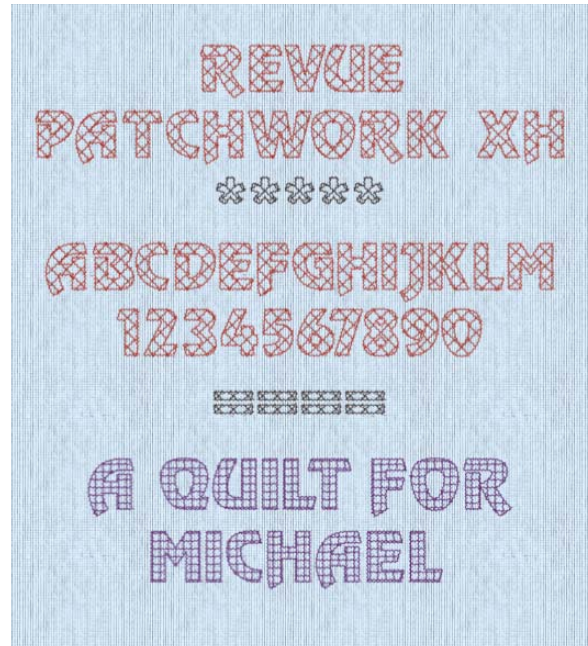


Revue 2C UC 25-120mm MF  
*Satin Line, Motif Fill*





Revue 2C UC 25-120mm SF  
*Satin Line, Spiral Fill*



Revue Patchwork UC 50-120mm XH  
*Crosshatch Fill, Double with Zigzag Return*



Revue UC 25-120mm MW  
*Triple Stitch, MultiWave Fill*



Stencil UC 15-100mm  
*Pattern Fill*



Swirl 25-55mm  
Continuous Satin



## Elegant Collection



American Gothic 25-75mm  
Continuous Satin



Anglo Saxon 20-80mm  
Continuous Satin



Corinthian 15-35mm  
Continuous Satin



Curlew 15-50mm  
Continuous Satin





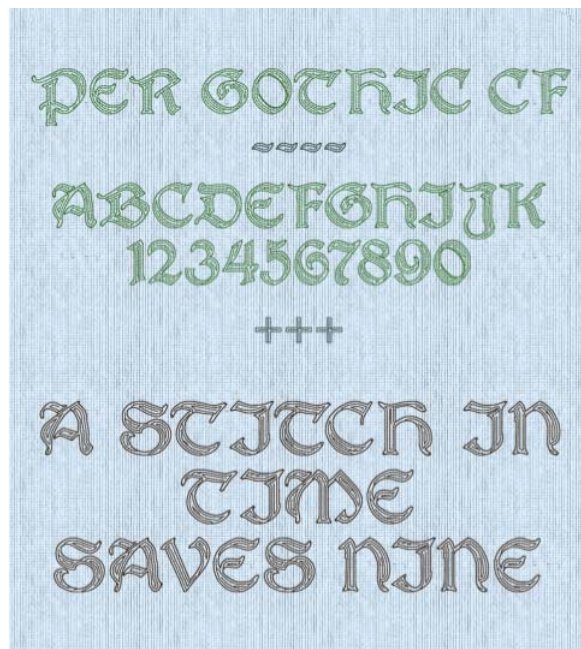
Old English 14-50mm  
Continuous Satin



Ornamental 3C UC 40-80mm  
Continuous Satin

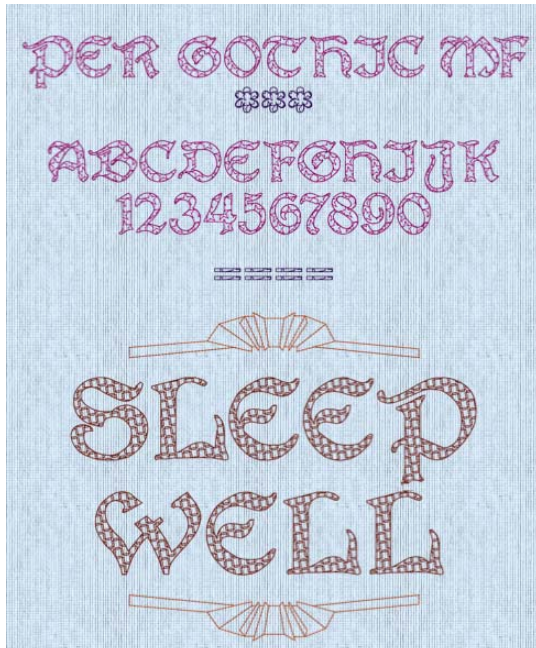


Per Gothic 20-50mm  
Pattern Fill



Per Gothic UC 25-120mm CF  
Triple Stitch, Contour Fill





Per Gothic UC 25-120mm MF  
*Triple Stitch, Motif Fill*

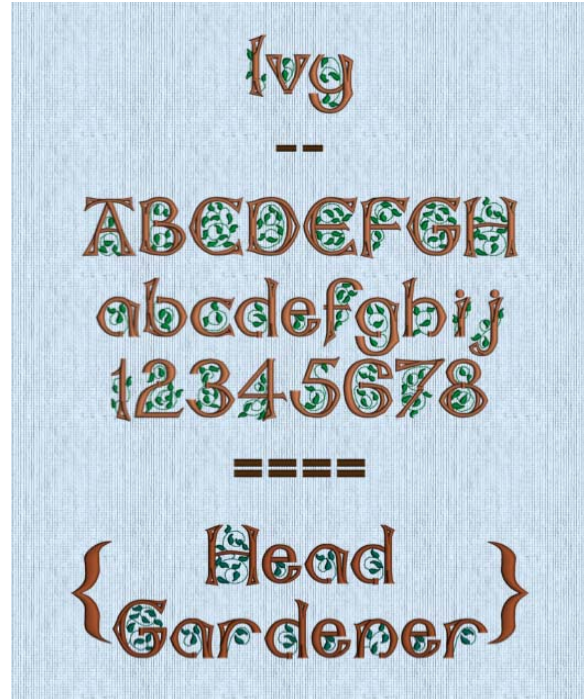


Ribbon 2C UC 18-65mm  
*Continuous Satin*

# Floral Collection



Acorn 6C UC 35-60mm  
Non-editable



Ivy 2C 15-60mm  
Continuous Satin



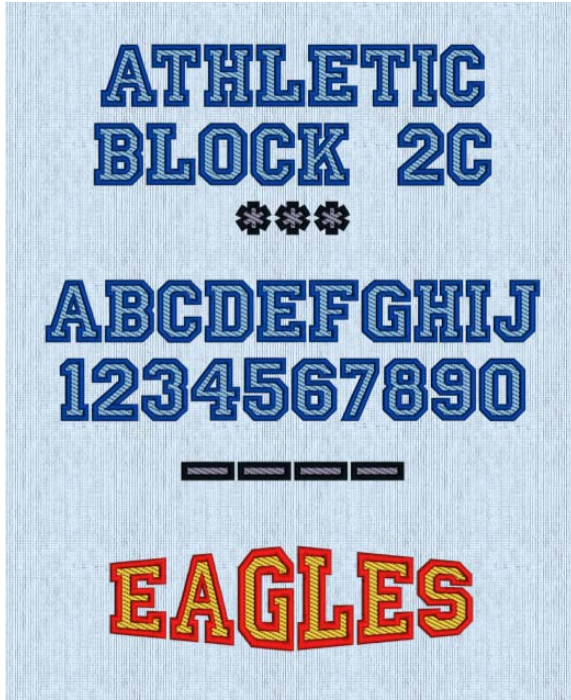
Primrose 2C UC 25-65mm  
Continuous Satin



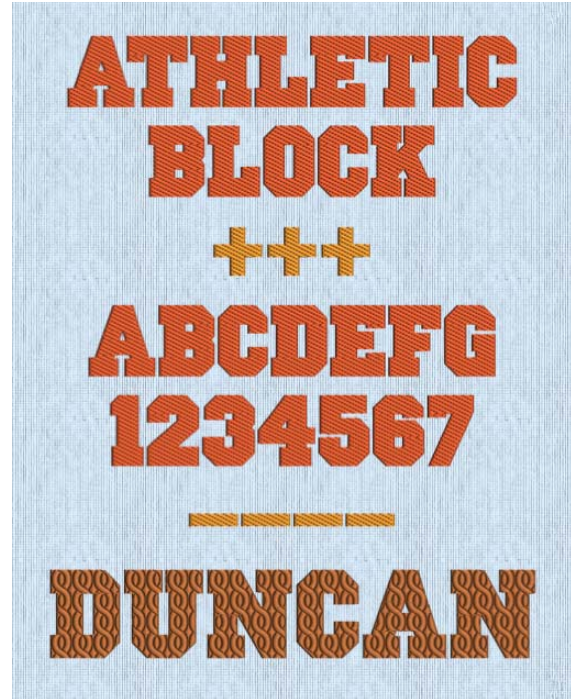
Vine 2C UC 25-40mm  
Continuous Satin



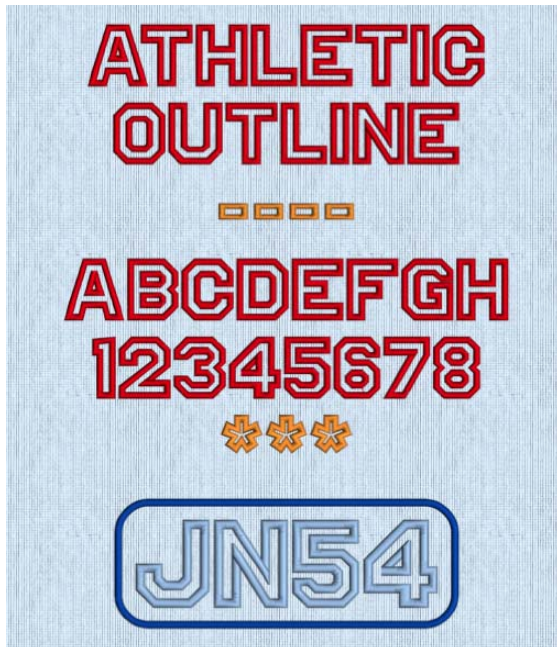
# Fun Collection



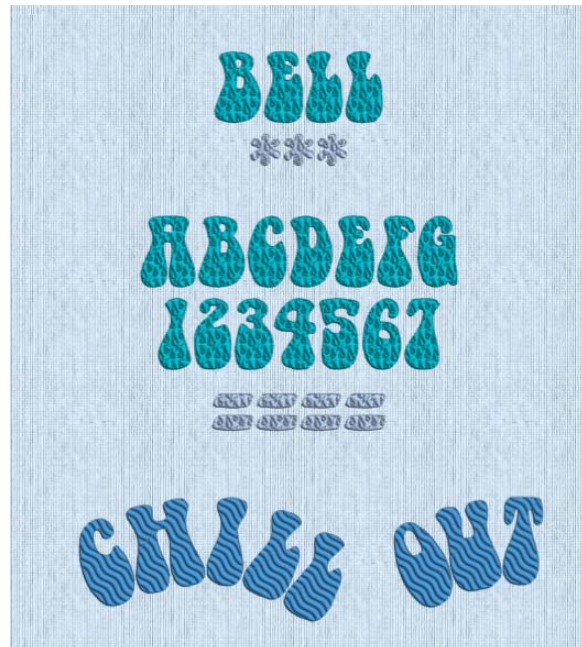
Athletic Block 2C UC 30-80mm  
*Pattern Fill, Continuous Satin*



Athletic Block UC 15-100mm  
*Pattern Fill*



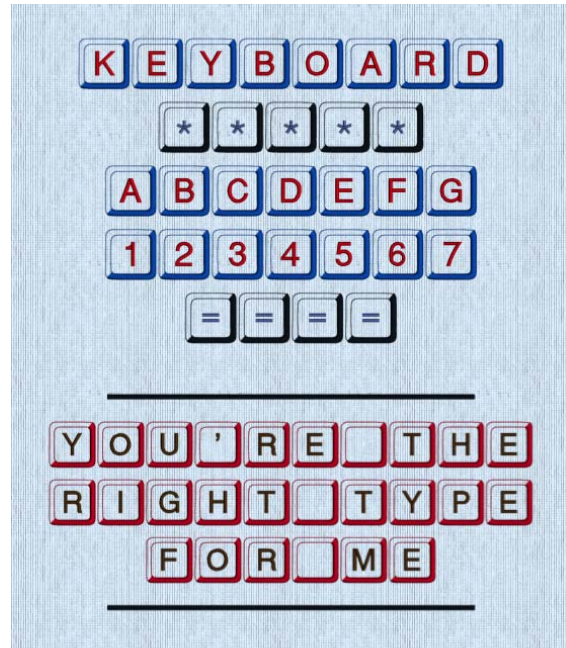
Athletic Outline UC 20-50mm  
*Continuous Satin*



Bell UC 20-100mm  
*Pattern Fill*



Brush Block 2C UC 20-30mm  
Continuous Satin



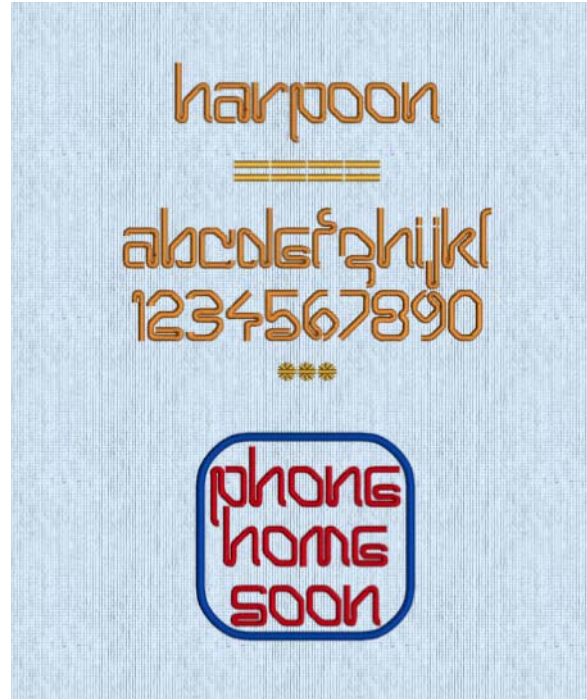
Keyboard 2C UC 30-80mm  
Running Stitch, Double Stitch, Continuous Satin



# Future Collection



Atom UC 20-40mm  
Continuous Satin



Harpoon LC 10-20mm  
Continuous Satin

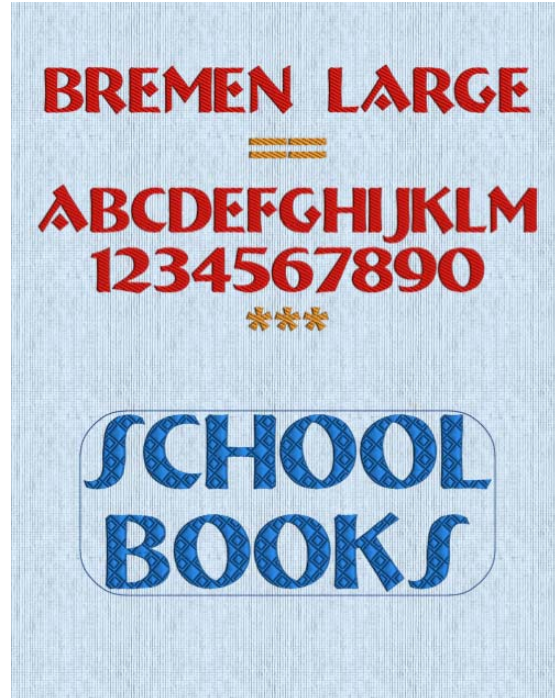


Skott UC 8-40mm  
Continuous Satin

# Modern Collection



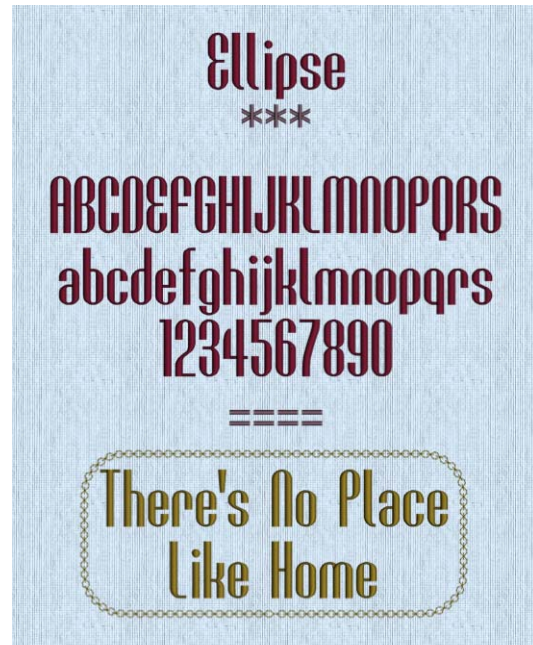
Bremen UC 10-25mm  
*Continuous Satin*



Bremen UC 15-60mm  
*Pattern Fill*

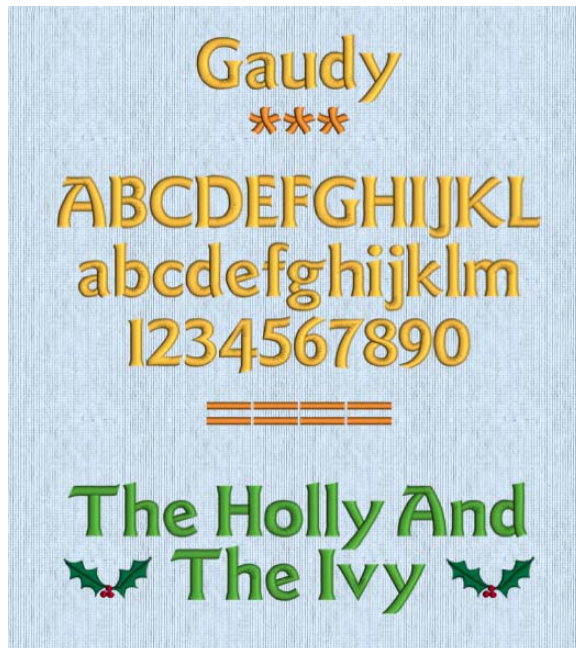


Carlton UC 15-45mm  
*Continuous Satin*

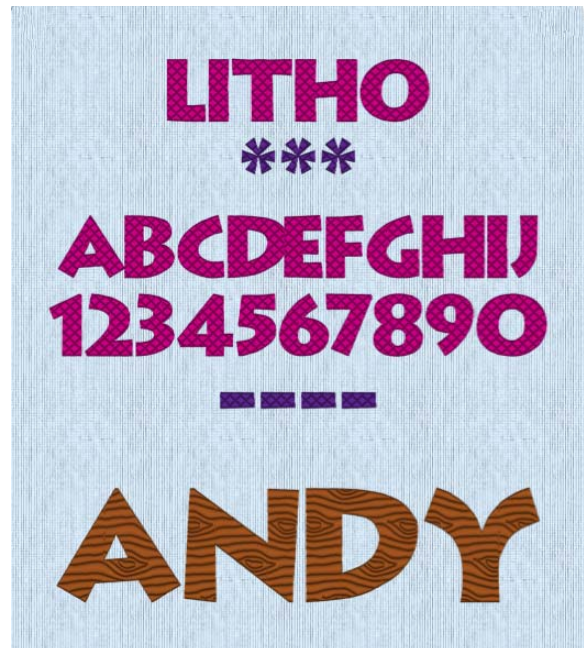


Ellipse 20-60mm  
*Continuous Satin*





Gaudy 12-30mm  
Continuous Satin



Litho UC 20-80mm  
Pattern Fill



Placid 10-45mm  
Continuous Satin



Rian 10-30mm  
Continuous Satin



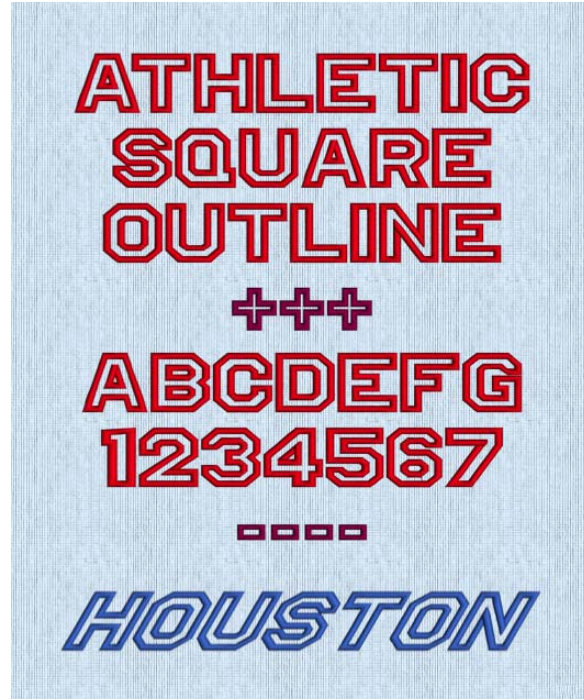
Rosita 12-32mm  
*Continuous Satin*



# Monogram Collection



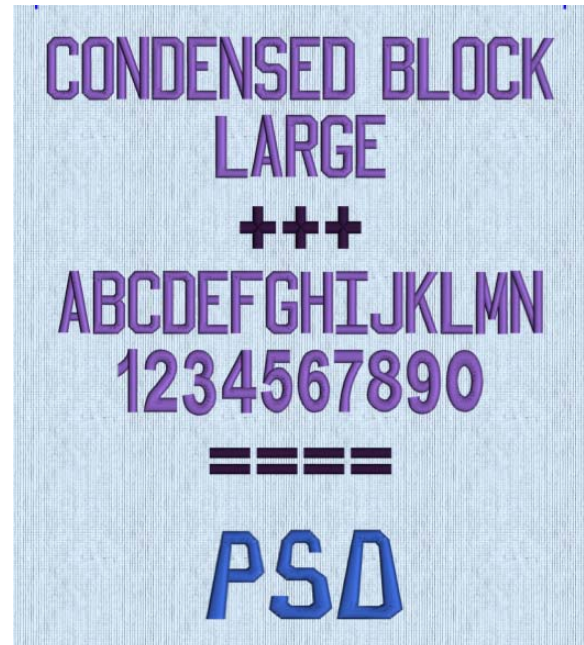
Athletic Square 2C UC 30-80mm  
*Pattern Fill, Continuous Satin*



Athletic Square Outline UC 15-50mm  
*Continuous Satin*



Condensed Block UC 15-25mm  
*Continuous Satin*



Condensed Block UC 25-50mm  
*Continuous Satin*

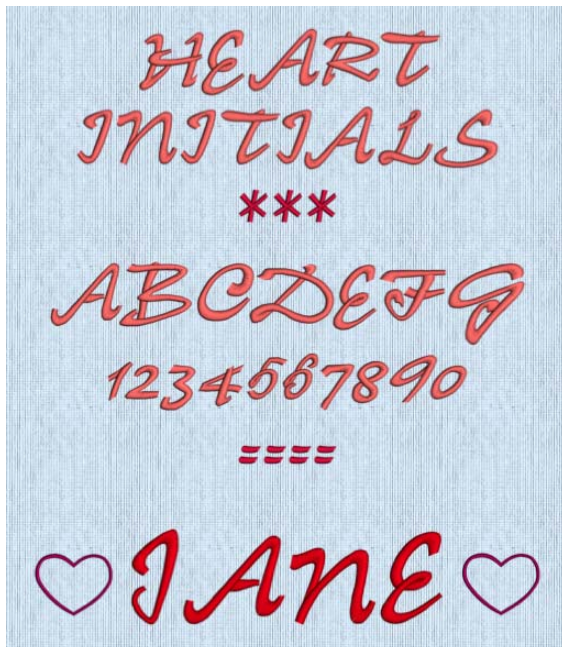




Curly UC 15-30mm  
Continuous Satin



Curly UC 25-50mm  
Continuous Satin

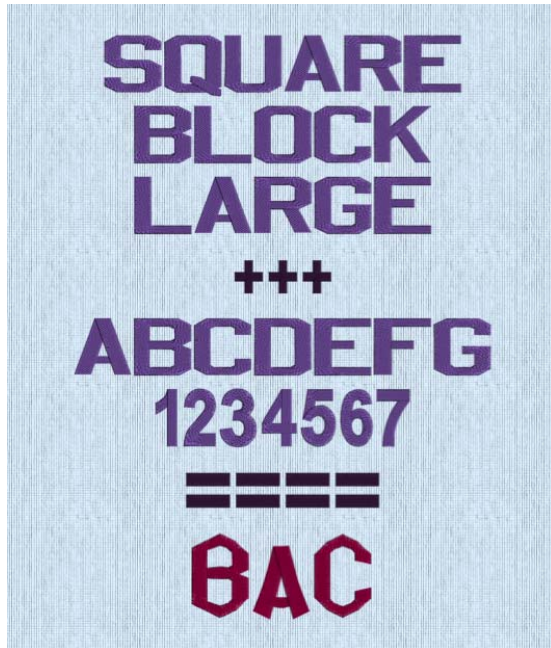


Heart Initials UC 30-50mm  
Continuous Satin

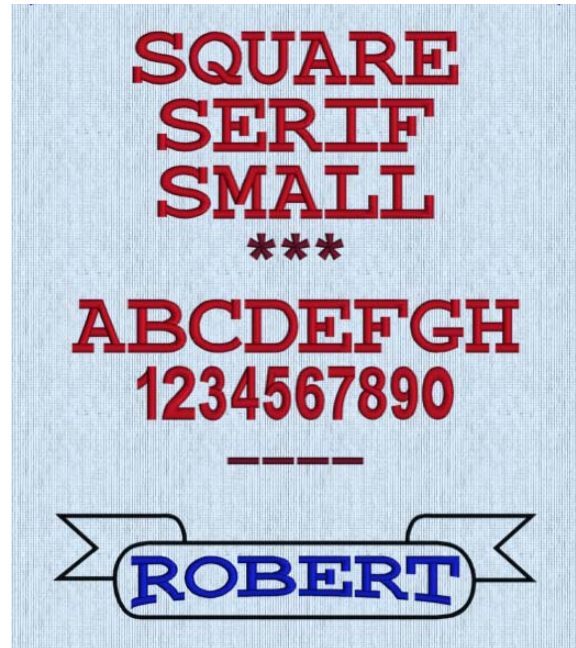


Square Block UC 15-30mm  
Continuous Satin





Square Block UC 30-50mm  
*Continuous Satin*



Square Serif UC 10-30mm  
*Continuous Satin*



Square Serif UC 20-65mm  
*Continuous Satin*

### Monogram Fonts

Fonts in the Monogram Collection use mainly even width characters. They are recommended for use with classic type monograms. Condensed Block and Square Block have alternative width characters for I, M, W and Ì, Í, Î or Ï. Use lower case for the alternative.

# National Collection



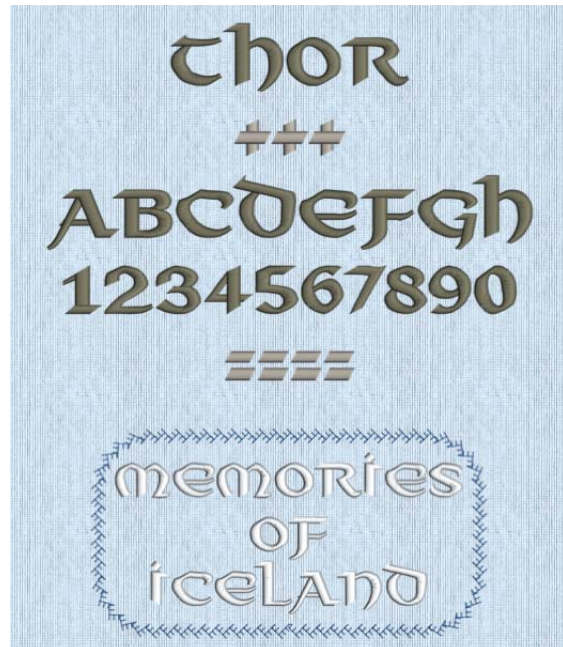
Celtic UC 6-35mm  
Continuous Satin



Gaelic 2C UC 25-40mm  
Continuous Satin



Mandarin UC 15-35mm  
Continuous Satin



Thor UC 10-30mm  
Continuous Satin





Greek 10-40mm  
Continuous Satin



Hebrew 10-40mm  
Continuous Satin

Α	Β	Γ	Δ	Ε	Θ	Η	Ι
A	B	C	D	E	F	H	I
Χ	Κ	Λ	Μ	Ν	Ο	Π	Ω
J	K	L	M	N	O	P	Q
Ρ	Σ	Τ	Υ	Ψ	Ξ	Φ	
R	S	T	U	V	W	X	Y
Ζ	α	β	γ	δ	ε	θ	η
Z	a	b	c	d	e	f	h
ι	χ	κ	λ	μ	ν	ο	π
i	j	k	l	m	n	o	p
ω	ρ	σ	τ	υ	ς	ψ	ξ
q	r	s	t	u	v	w	x
φ	ξ						
y	z						

Greek

On your keyboard, use the character below the Greek character to write that character. Numbers, symbols and punctuation use their usual keys.

א	ב	ג	ד	ה	ו	ז	ח
!	A	B	C	D	E	F	G
ט	י	כ	ל	מ	נ	ס	ע
H	I	J	K	L	M	N	O
פ	ק	ר	ש	ת			
P	Q	R	S	T	U	V	W
ם	ן	ף					
X	Y	Z					

Hebrew

On your keyboard, use the character below the Hebrew character to write that character. Numbers, symbols and punctuation use their usual keys.

## Nearest Point Collection



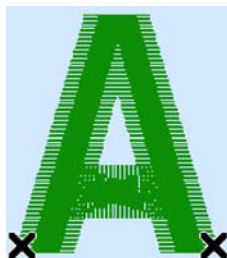
Antonia NP 05-10mm  
*Continuous Satin*



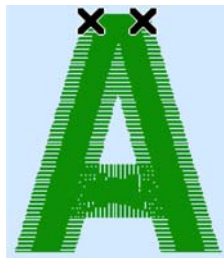
Arial 25-40mm  
*Continuous Satin*

### Nearest Point

Nearest point fonts use special logic to determine the best way to join characters together. There are four versions of each character to enable the special joining method. Nearest Point fonts are ideally used with Running Stitch connection, to avoid the need for trimming with small characters. Each character has four versions to give different start (on the left) and end (on the right) points as shown below. The correct character versions are automatically selected to give the shortest joining distances between each character.



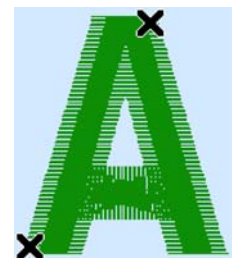
Bottom Left to  
Bottom Right



Top Left to  
Top Right



Top Left to  
Bottom Right



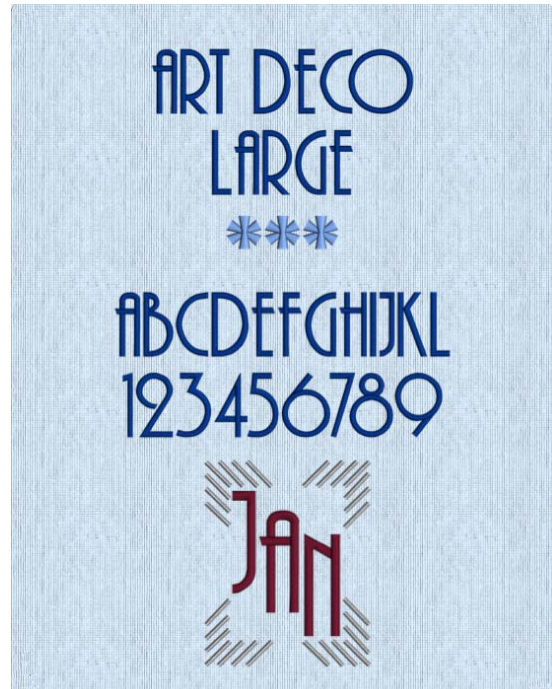
Bottom Left to  
Top Right



# Retro Collection



Art Deco 15-50mm  
Continuous Satin



Art Deco 50-100mm  
Continuous Satin



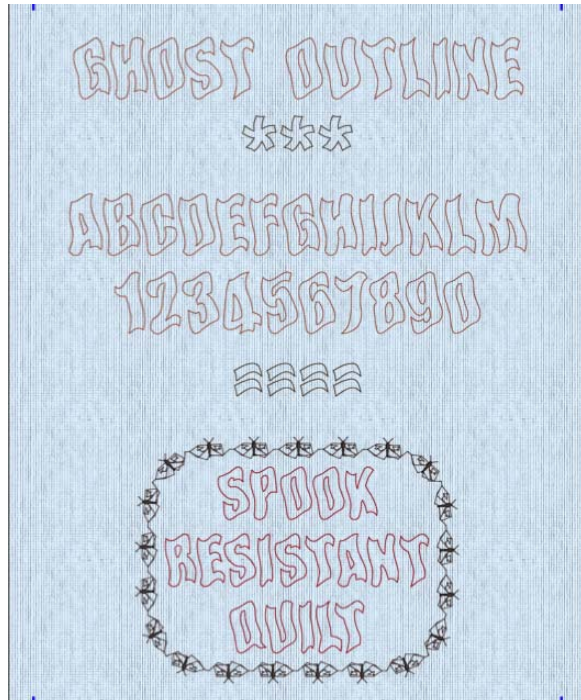
Art Nouveau 12-20mm  
Continuous Satin



SanFran 15-60mm  
Pattern Fill, Continuous Satin



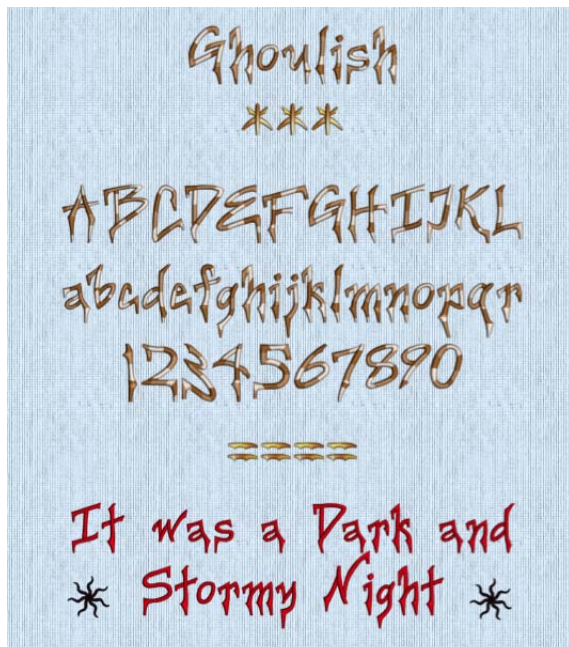
# Scary Collection



Ghost Outline 15-50mm  
Running Stitch, Triple Stitch



Ghost UC 15-100mm  
Pattern Fill



Ghoulish 18-36mm  
Continuous Satin



Halloween 15-100mm  
Pattern Fill



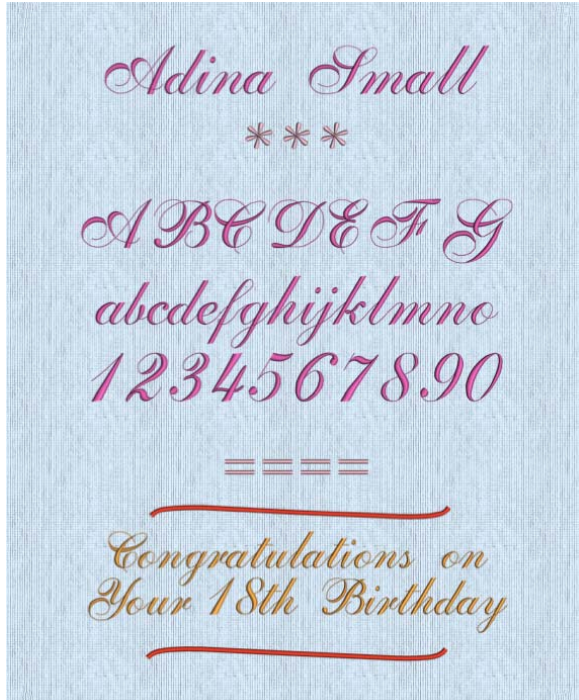


Spooky Outline UC 15-50mm  
Triple Stitch



Spooky UC 15-100mm  
Pattern Fill

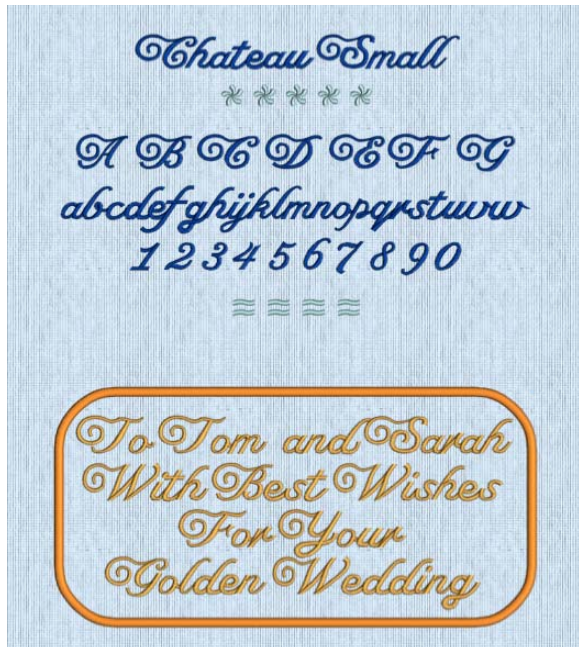
# Script Collection



Adina 12-40mm  
Continuous Satin, Triple Stitch



Adina 25-100mm  
Continuous Satin



Chateau 12-20mm  
Continuous Satin



Chateau 20-30mm  
Continuous Satin





Chateau Uniform 20-30mm  
Continuous Satin



Nimbus 15-45mm  
Continuous Satin



Park 30-45mm  
Continuous Satin

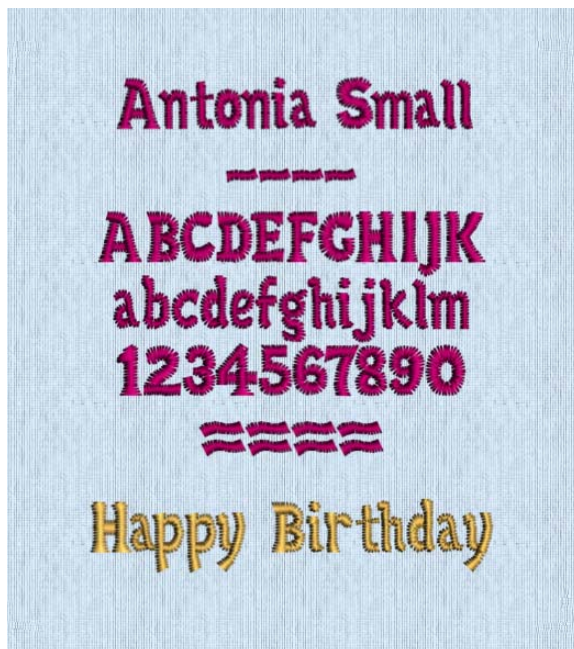
# Traditional Collection



Antonia 10-20mm  
Continuous Satin



Antonia 15-35mm  
Continuous Satin



Antonia 5-10mm  
Continuous Satin

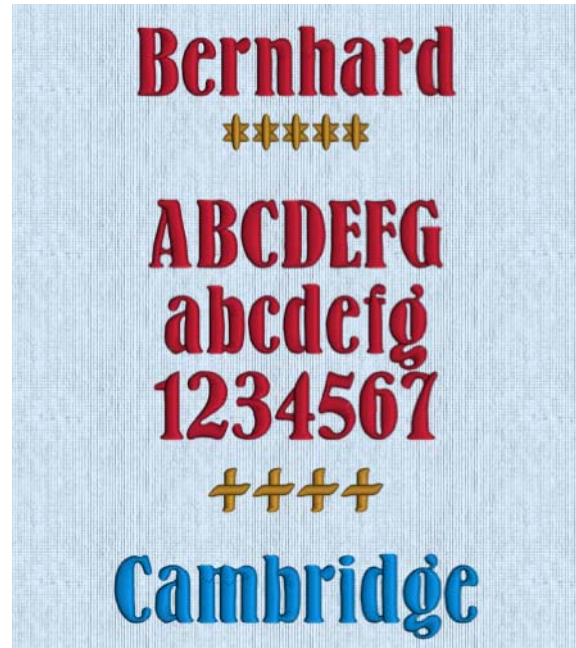


Arial 08-14mm  
Continuous Satin

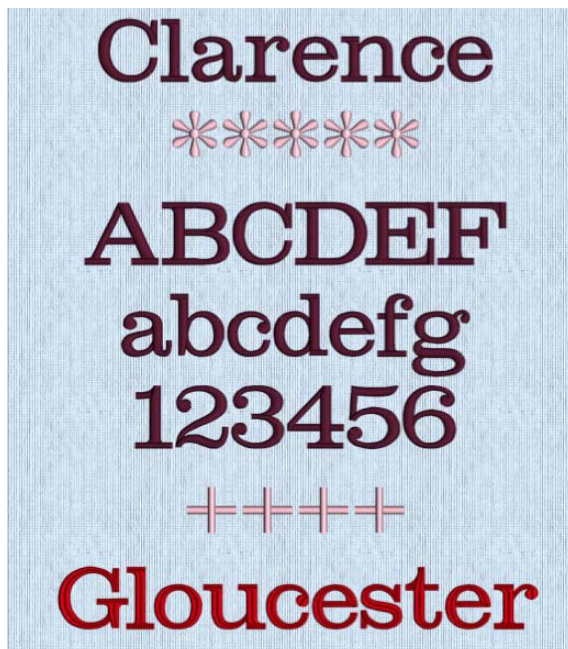




Arial 14-20mm  
Continuous Satin



Bernhard 15-35mm  
Continuous Satin

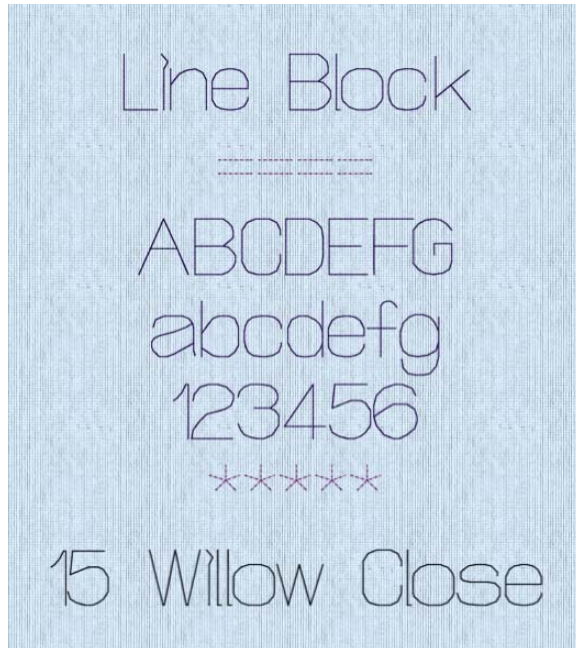


Clarence 10-45mm  
Continuous Satin



Fine Corsiva 6-10mm  
Continuous Satin





Line Block 3-20mm  
Non-editable



Narrow Block 6-10mm  
Continuous Satin



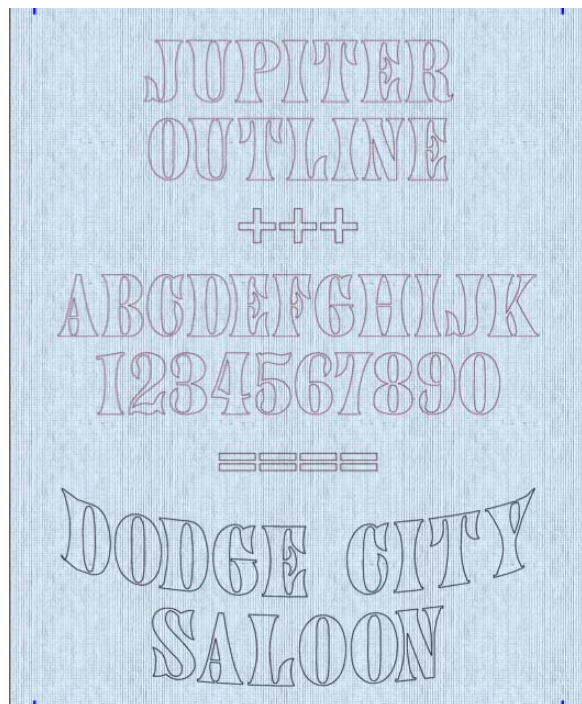
President 20-90mm  
Continuous Satin



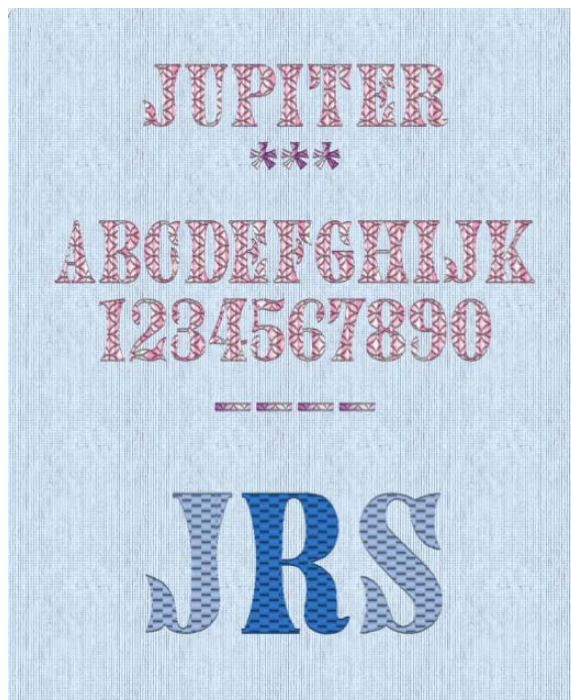
Scribe Outline B 15-50mm  
Triple Stitch



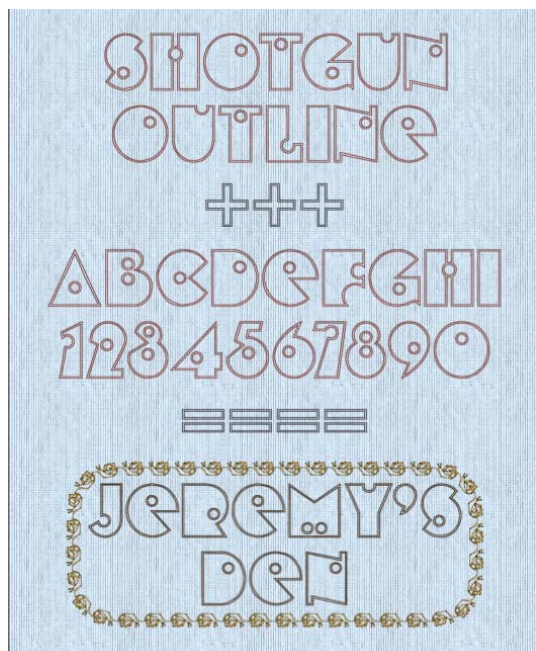
# Wild West Collection



Jupiter Outline UC 20-60mm  
*Triple Stitch*



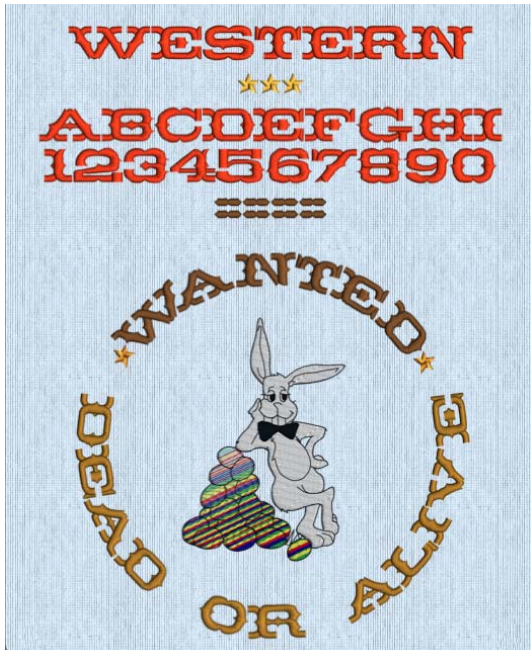
Jupiter 40-100mm  
*Pattern Fill*



Shotgun Outline UC 30-100mm  
*Triple Stitch*



Shotgun UC 25-100mm  
*Pattern Fill*



Western UC 10-35mm  
*Continuous Satin*